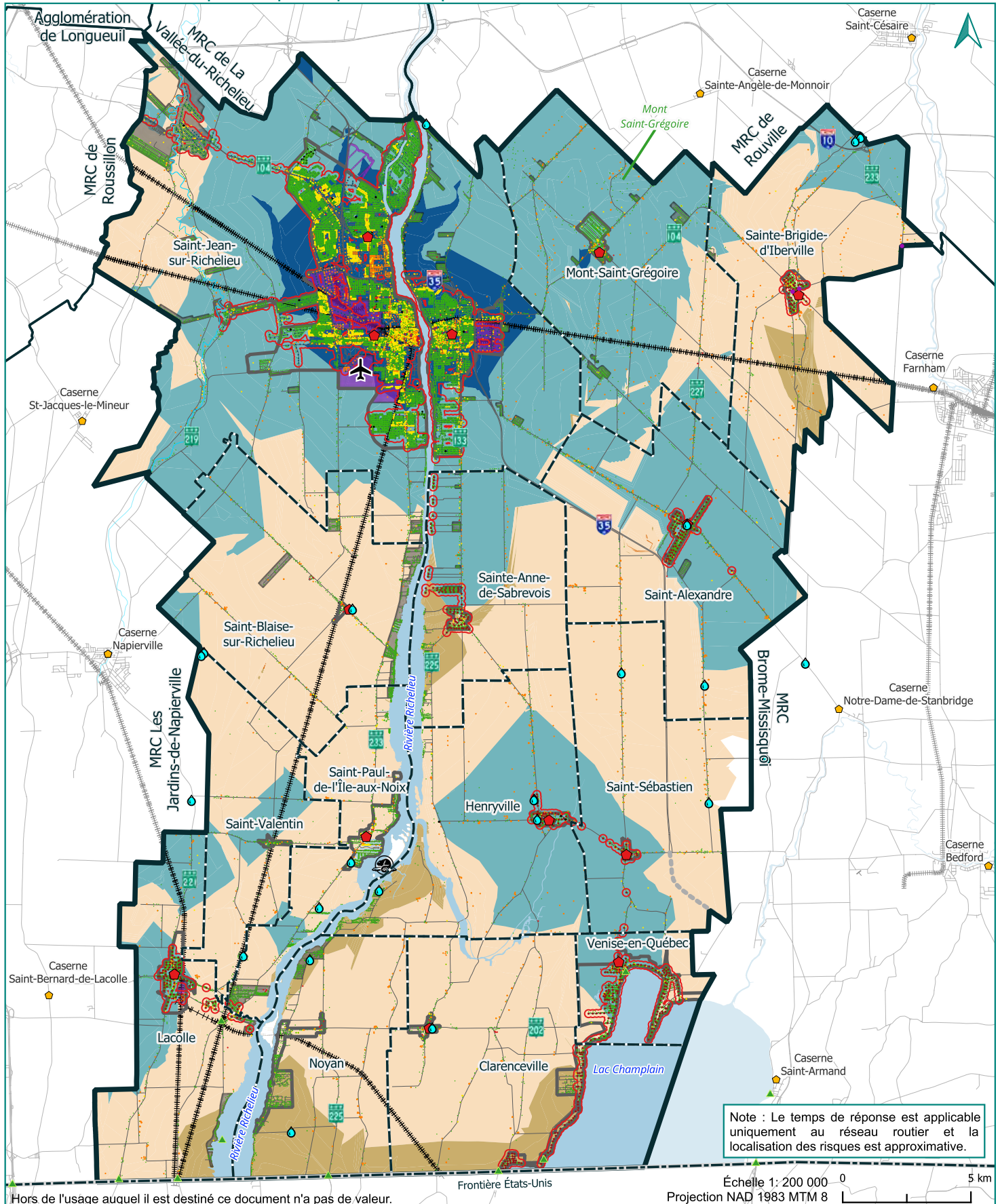



# Carte 13 : Temps de réponse pour les risques faibles – Fin de semaine



Note : Le temps de réponse est applicable uniquement au réseau routier et la localisation des risques est approximative.

Échelle 1 : 200 000 0 5 km  
Projection NAD 1983 MTM 8

Hors de l'usage auquel il est destiné ce document n'a pas de valeur.



Réalisation : Isabelle Houle  
Vérification : Michelle Chabot  
Format papier : 8,5 x 11 po  
Date : 22-08-2024

<ul style="list-style-type: none"> <li><span style="color: red;">●</span> Caserne MRCHR</li> <li><span style="color: orange;">●</span> Caserne hors MRCHR</li> <li><span style="color: blue;">✈</span> Aéroport</li> <li><span style="color: grey;">🏰</span> Lieu historique national du Fort-Lennox</li> <li><span style="color: green;">▲</span> Douane</li> </ul>	<ul style="list-style-type: none"> <li><span style="border-bottom: 1px dashed black; width: 20px; display: inline-block;"></span> Frontière États-Unis</li> <li><span style="border-bottom: 1px solid black; width: 20px; display: inline-block;"></span> Voie ferrée</li> <li><span style="border-bottom: 1px dotted black; width: 20px; display: inline-block;"></span> Réseau routier</li> <li><span style="border-bottom: 1px dashed grey; width: 20px; display: inline-block;"></span> Prolongement A-35</li> <li><span style="border-bottom: 1px solid blue; width: 20px; display: inline-block;"></span> Cours d'eau</li> </ul>	<ul style="list-style-type: none"> <li><span style="background-color: lightblue; width: 10px; height: 10px; display: inline-block;"></span> Étendue d'eau</li> <li><span style="border: 1px solid black; width: 10px; height: 10px; display: inline-block;"></span> Limite de la MRC</li> <li><span style="border: 1px dashed black; width: 10px; height: 10px; display: inline-block;"></span> Limite MRC voisine</li> <li><span style="border: 1px solid grey; width: 10px; height: 10px; display: inline-block;"></span> Limite municipale</li> <li><span style="border: 1px solid black; width: 10px; height: 10px; display: inline-block;"></span> Périmètre d'urbanisation</li> </ul>	<ul style="list-style-type: none"> <li><span style="background-color: purple; width: 10px; height: 10px; display: inline-block;"></span> Affectation industrielle</li> <li><span style="background-color: pink; width: 10px; height: 10px; display: inline-block;"></span> Secteur potentiel de développement industriel</li> <li><span style="background-color: grey; width: 10px; height: 10px; display: inline-block;"></span> Zone de concentration de population hors pu</li> </ul>	<ul style="list-style-type: none"> <li><span style="color: green;">●</span> 1-Faible</li> <li><span style="color: yellow;">●</span> 2-Moyen</li> <li><span style="color: orange;">●</span> 3-Élevé</li> <li><span style="color: red;">●</span> 4-Très élevé</li> <li><span style="color: blue;">●</span> Borne sèche, pompe ou point d'eau – annuel</li> </ul>	<ul style="list-style-type: none"> <li><span style="border: 1px solid red; width: 10px; height: 10px; display: inline-block;"></span> Borne-fontaine conforme (1 500 l/min - 30 minutes)</li> <li><span style="border: 1px solid blue; width: 10px; height: 10px; display: inline-block;"></span> Borne-fontaine non conforme</li> <li><span style="border: 1px solid purple; width: 10px; height: 10px; display: inline-block;"></span> Borne-fontaine dédiée citerne</li> <li><span style="border: 1px solid black; width: 10px; height: 10px; display: inline-block;"></span> Distance de 152 m d'une borne-fontaine conforme</li> </ul>	<ul style="list-style-type: none"> <li><span style="background-color: blue; width: 10px; height: 10px; display: inline-block;"></span> Temps de réponse - risque faible FIN DE SEMAINE</li> <li><span style="background-color: lightblue; width: 10px; height: 10px; display: inline-block;"></span> Moins de 10 minutes</li> <li><span style="background-color: yellow; width: 10px; height: 10px; display: inline-block;"></span> 10 à 15 minutes</li> <li><span style="background-color: orange; width: 10px; height: 10px; display: inline-block;"></span> 15 à 20 minutes</li> <li><span style="background-color: red; width: 10px; height: 10px; display: inline-block;"></span> 20 à 25 minutes</li> <li><span style="background-color: purple; width: 10px; height: 10px; display: inline-block;"></span> 25 à 30 minutes</li> </ul>
--	--	---	--	--	---	--

Sources : Adresses Québec 2023, Gouvernement du Québec 2023, MRCHR 2024.